

# TDG SPILL BRIEFING

Dan Turner  
Water Quality Team Lead  
Reservoir Control Center  
24 April 2019

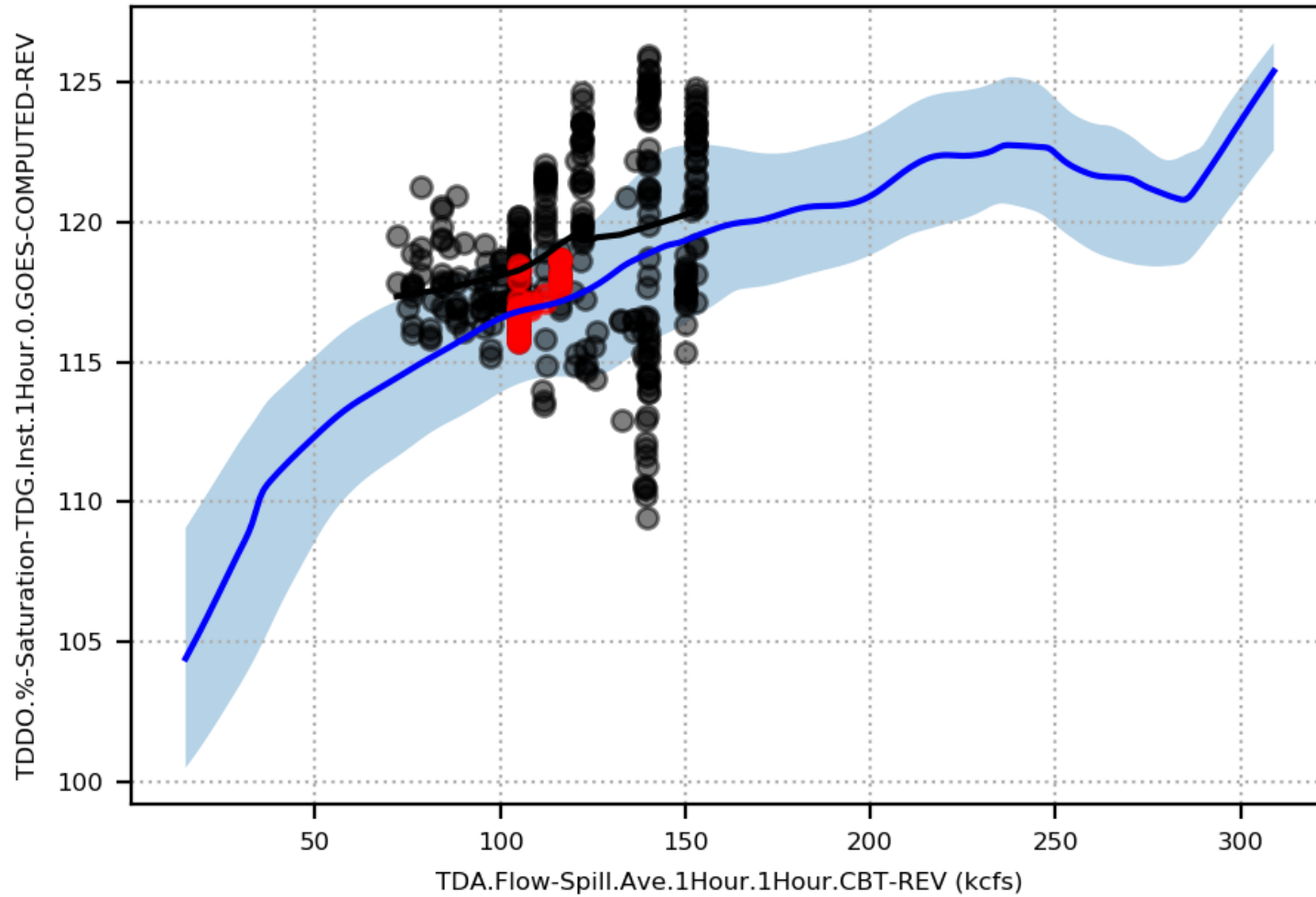


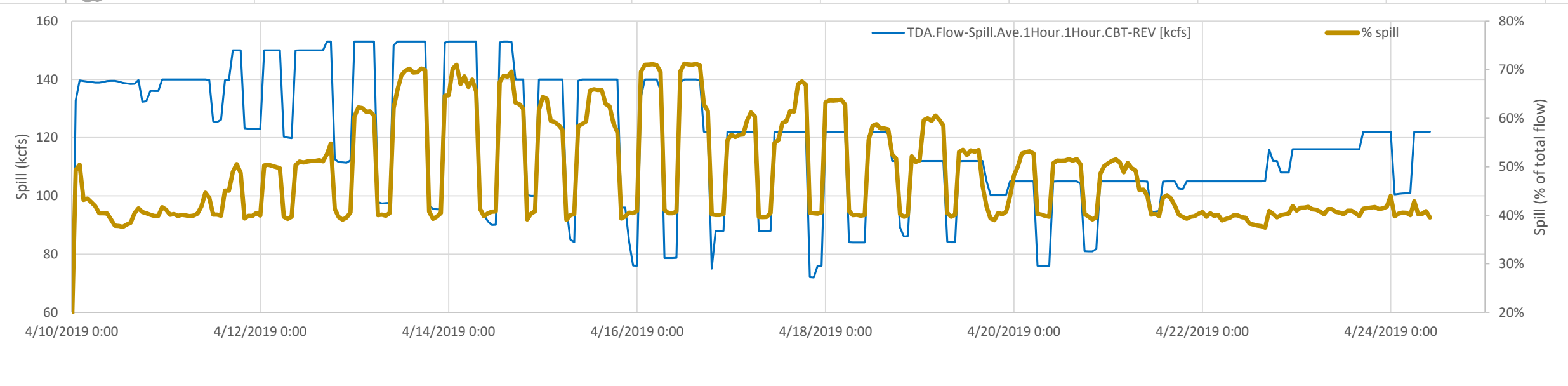
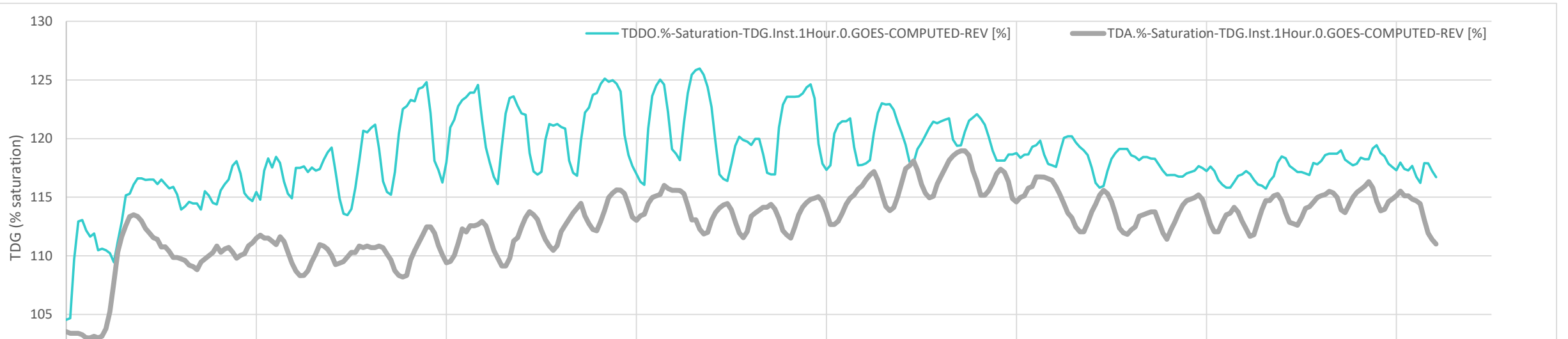
US Army Corps  
of Engineers®

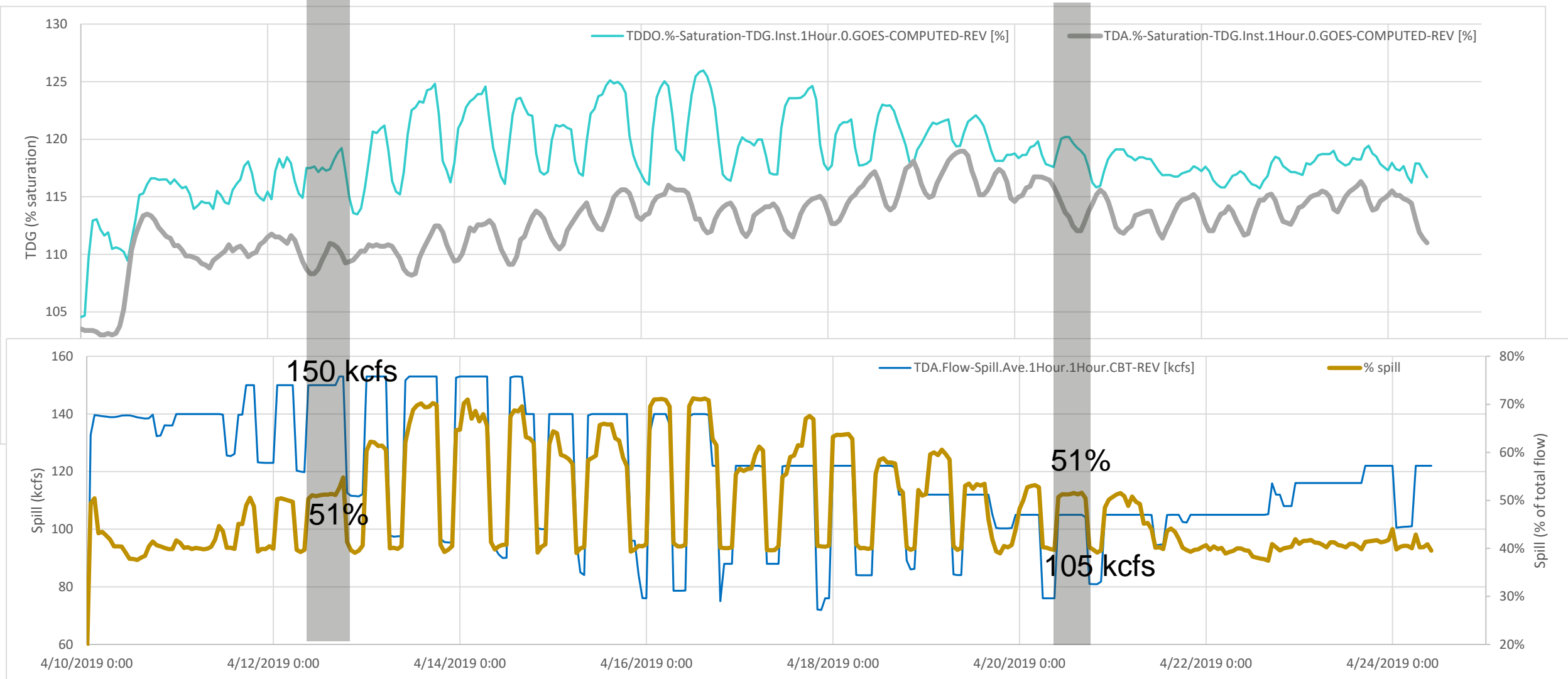


TDA 4/23/2019 1427

- 4/10-4/23
- 4/22-4/23
- 7d reg.
- 50th P (2011-2017)







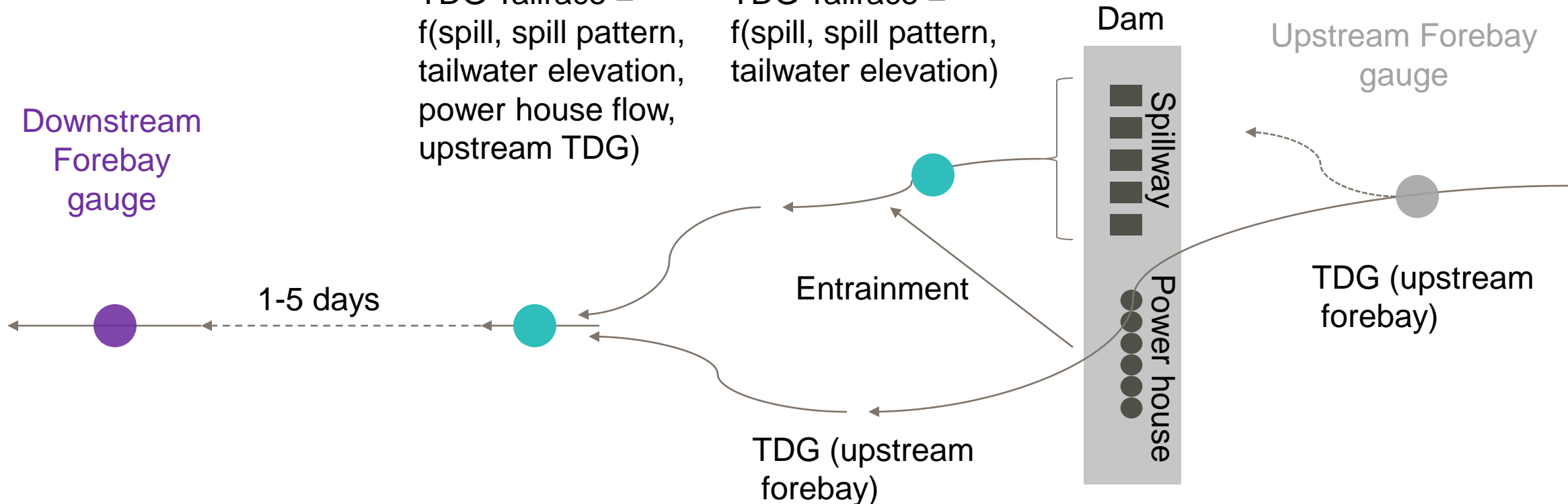
Note: Spill caps ranged from 105 to 153 kcfs, so far in April



### Tailrace gauge

Case 1: Mixed  
 TDG Tailrace =  
 f(spill, spill pattern,  
 tailwater elevation,  
 power house flow,  
 upstream TDG)

Case 2: Spillway only  
 TDG Tailrace =  
 f(spill, spill pattern,  
 tailwater elevation)



TDG downstream forebay =  
 f(TDG Tailrace, TDG upstream forebay, spill flow,  
 powerhouse flow, travel time, wind speed, water  
 temperature, barometric pressure, dispersion)







# THE DALLES: SPILL CAP AS A PERCENT OF TOTAL FLOW



- Should be a better predictor of TDG
- Still targets gas cap – 120% at the tailwater gauge
- Still evaluated daily and adjusted as needed
- Automatically adjusts with the hydrograph
- Based on hourly total flow (i.e. gas cap spill changes hourly)
- Could range from 40 to 60%
- Trial basis – Corps will adjust as needed