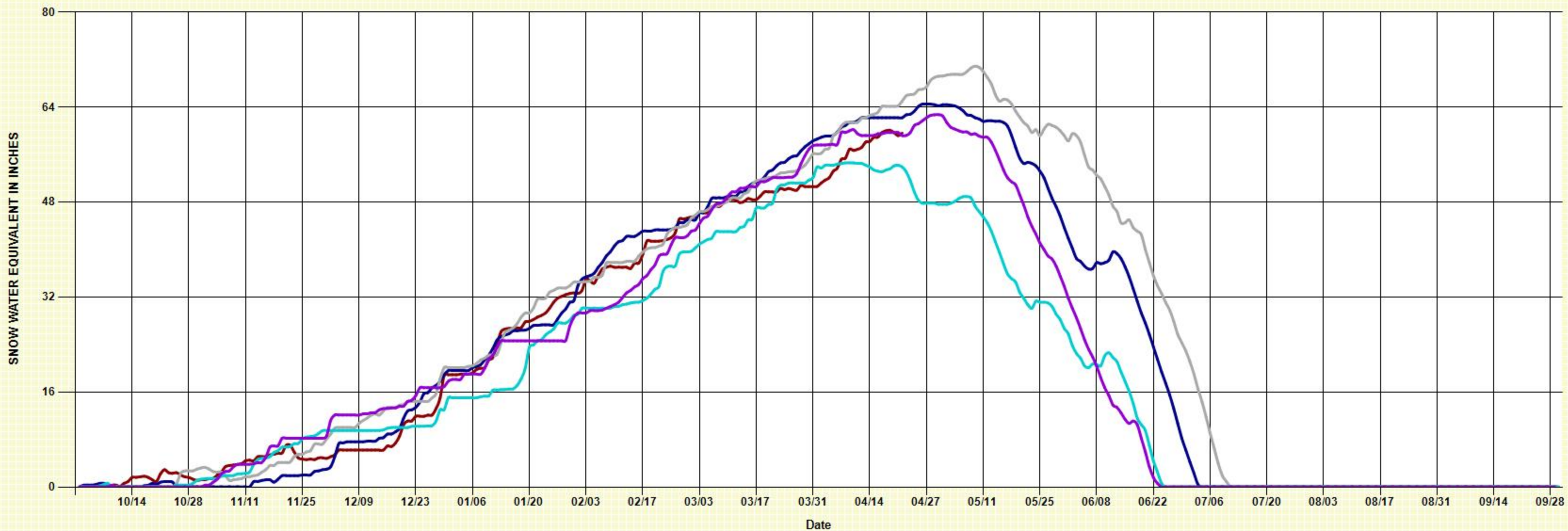
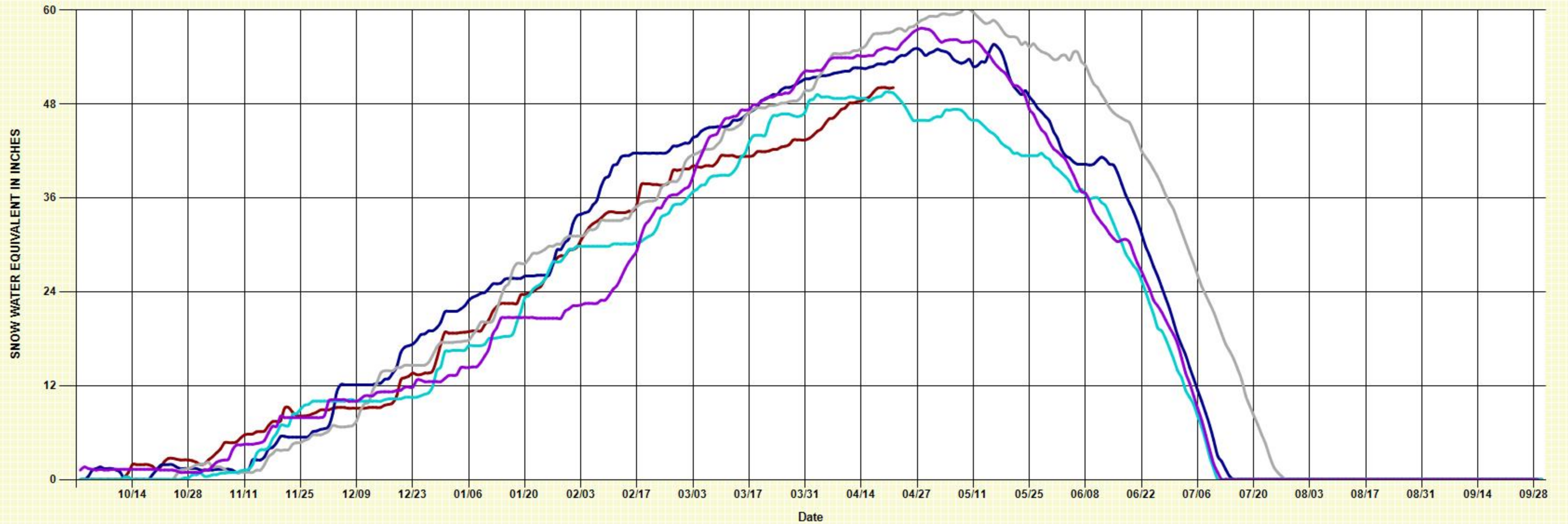


USACE - Walla Walla District -- Engineering Division - Hydrology Section
HEMLOCK BUTTE SNOTEL -- SNOW WATER EQUIVALENT ELEV = 5810
Created on: 23-Apr-2018



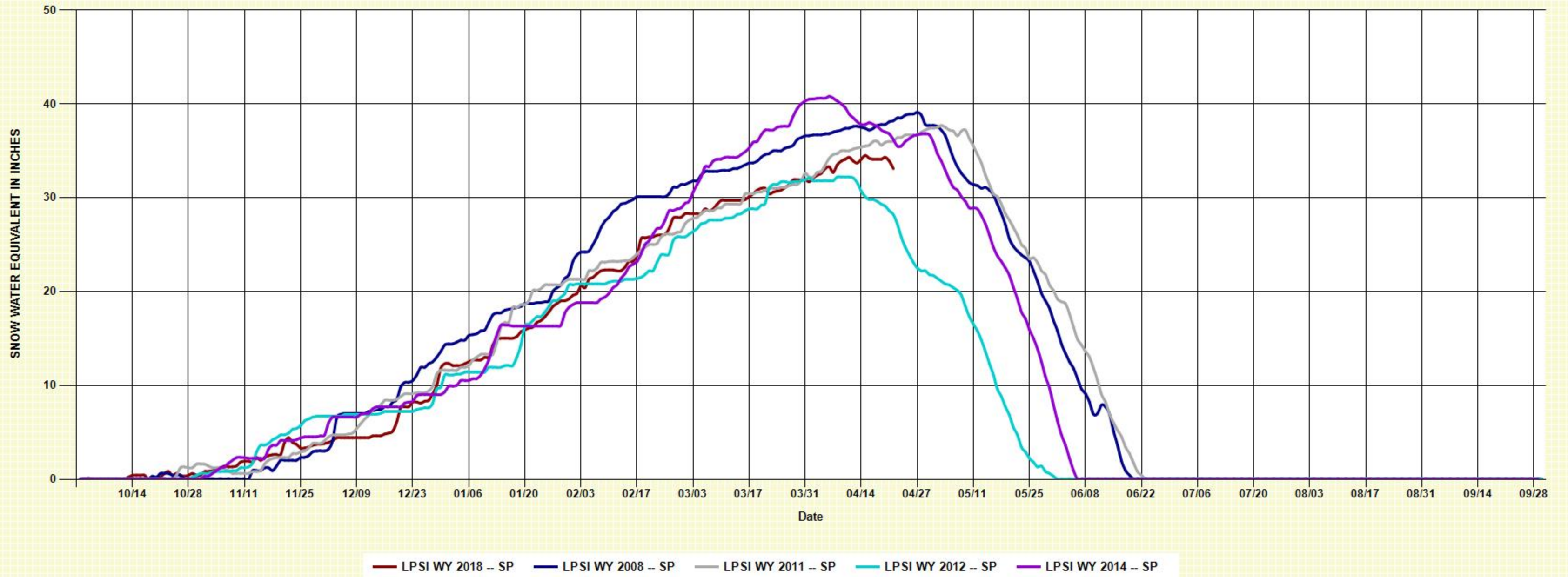
HEMI WY 2018 -- SP HEMI WY 2008 -- SP HEMI WY 2011 -- SP HEMI WY 2012 -- SP HEMI WY 2014 -- SP

USACE - Walla Walla District -- Engineering Division - Hydrology Section
HOODOO BASIN SNOTEL -- SNOW WATER EQUIVALENT ELEV = 6050
Created on: 23-Apr-2018

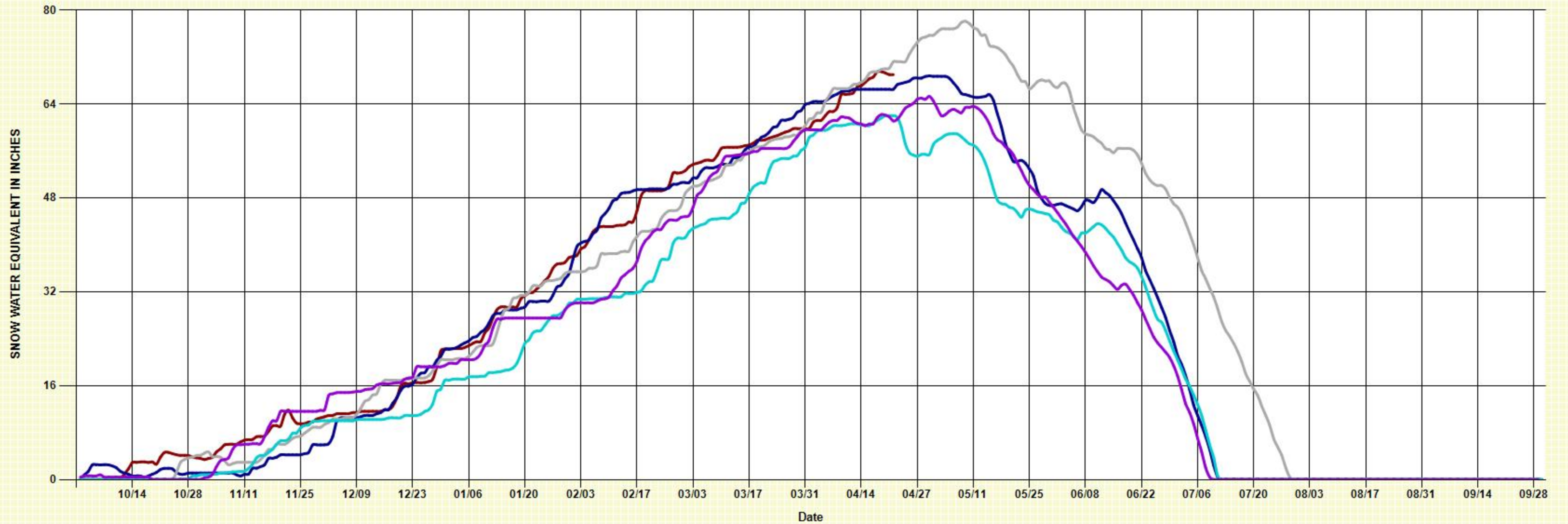


— HOOM WY 2018 -- SP — HOOM WY 2008 -- SP — HOOM WY 2011 -- SP — HOOM WY 2012 -- SP — HOOM WY 2014 -- SP

USACE - Walla Walla District -- Engineering Division - Hydrology Section
LOLO PASS SNOTEL -- SNOW WATER EQUIVALENT ELEV = 5240
Created on: 23-Apr-2018

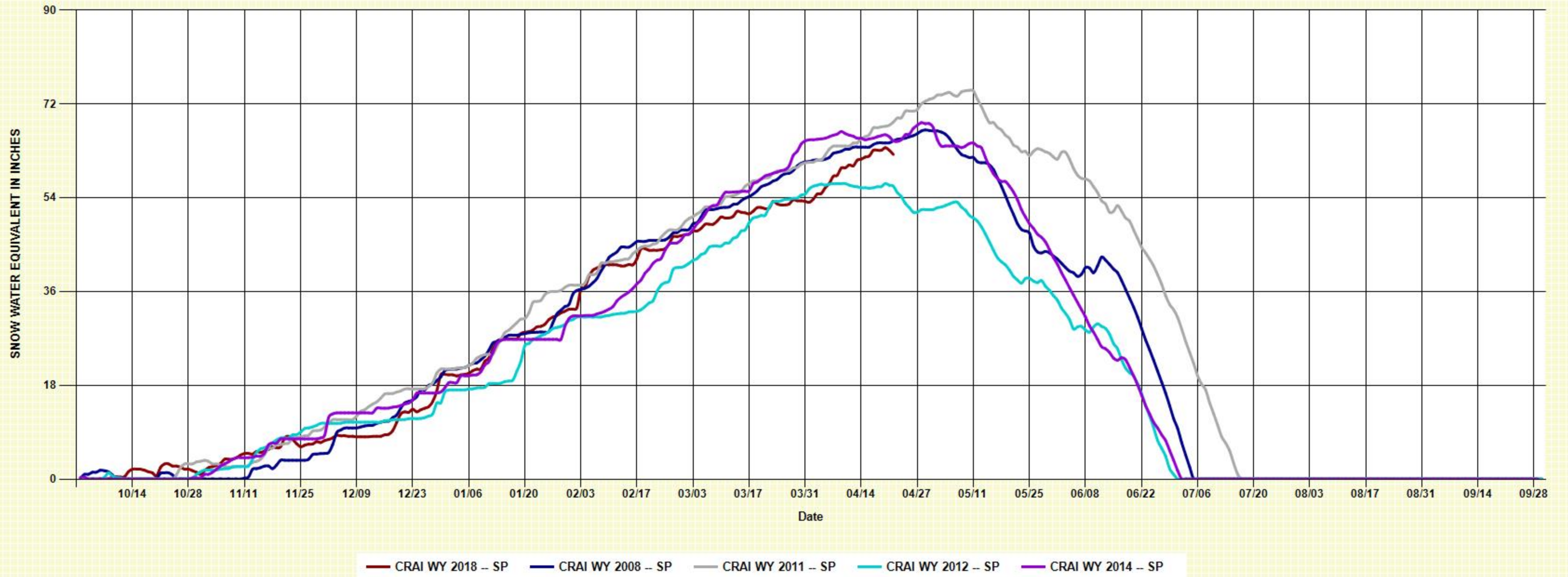


USACE - Walla Walla District -- Engineering Division - Hydrology Section
LOST LAKE SNOTEL -- SNOW WATER EQUIVALENT ELEV = 6110
Created on: 23-Apr-2018



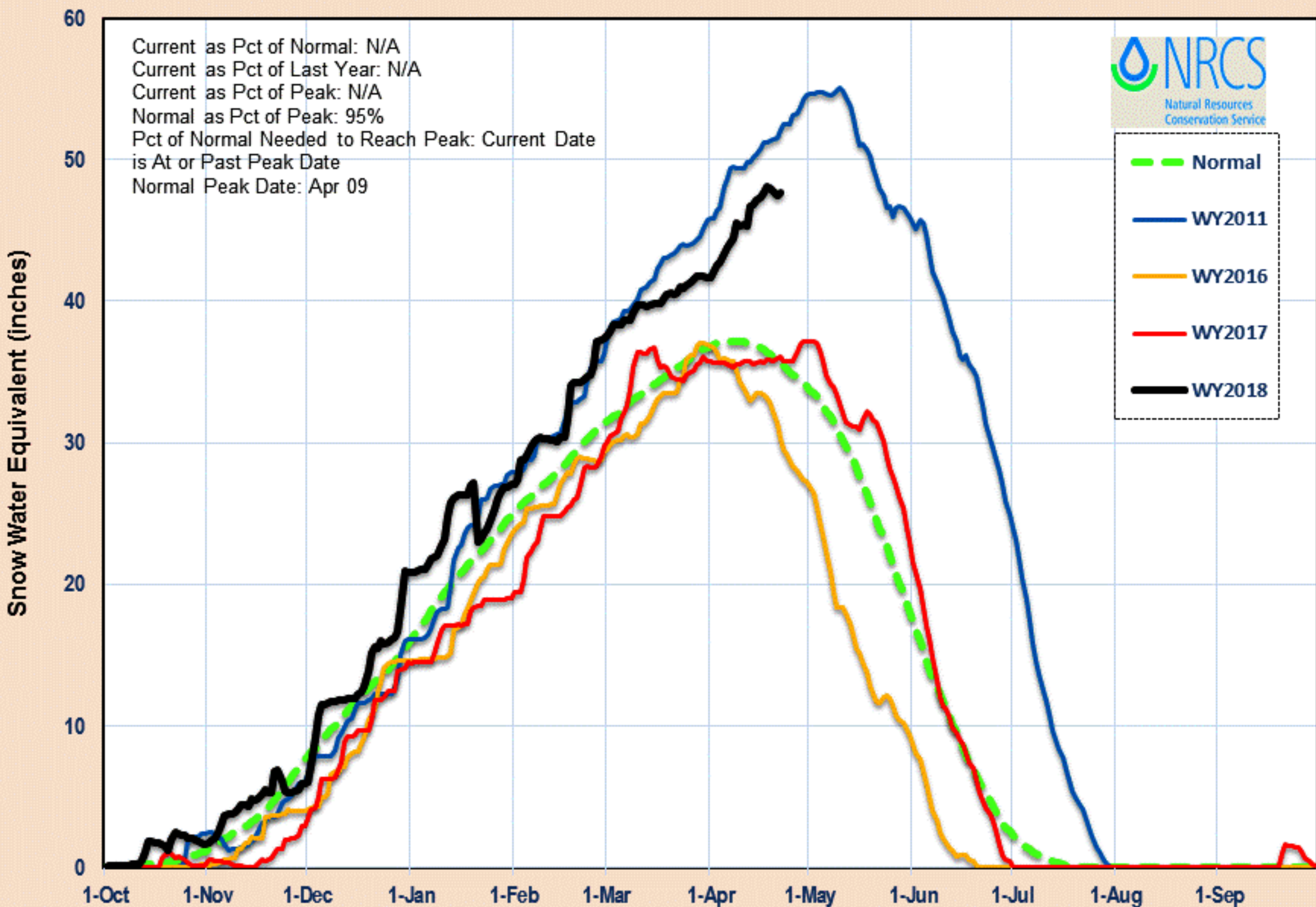
— LSLI WY 2018 -- SP — LSLI WY 2008 -- SP — LSLI WY 2011 -- SP — LSLI WY 2012 -- SP — LSLI WY 2014 -- SP

USACE - Walla Walla District -- Engineering Division - Hydrology Section
CRATER MEADOWS SNOTEL -- SNOW WATER EQUIVALENT ELEV = 5960
Created on: 23-Apr-2018



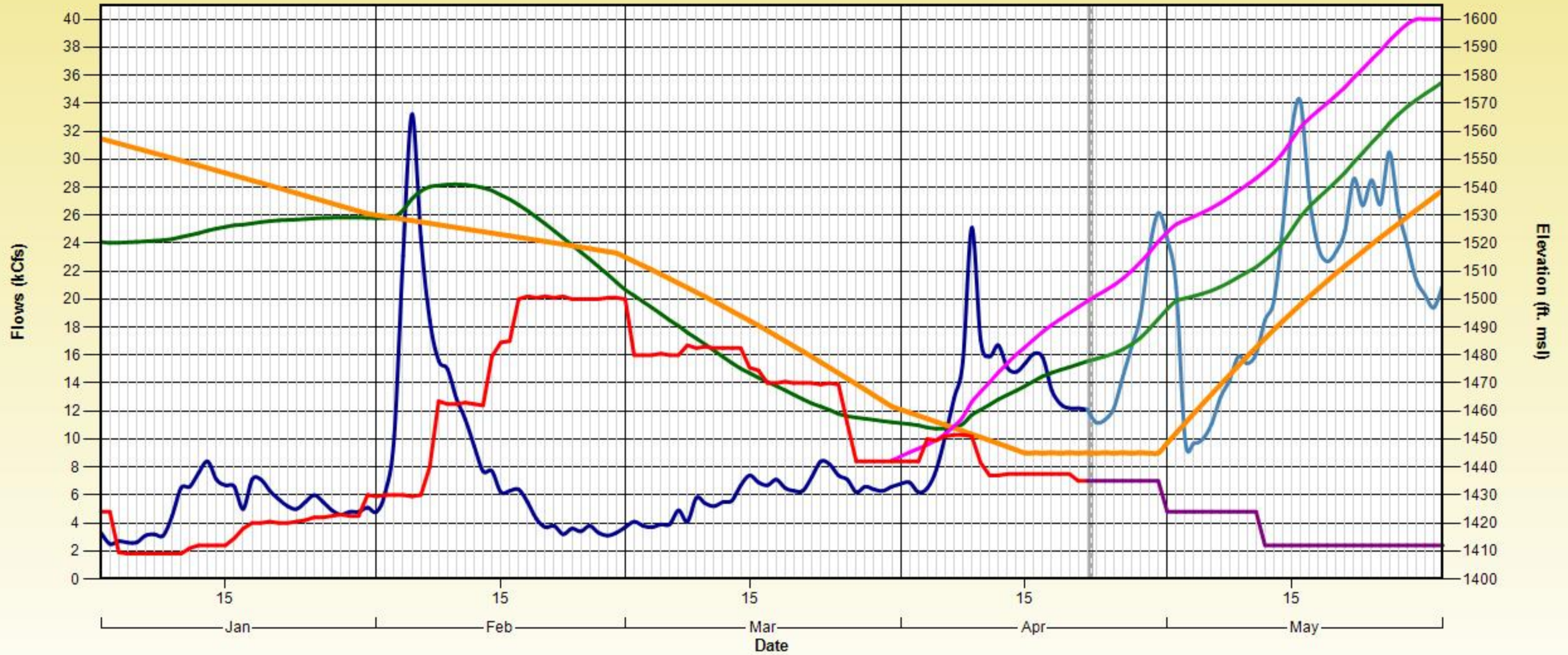
Dworshak 2018 Snowpack Comparison Graph (8 sites)

Based on Provisional SNOTEL data as of Apr 23, 2018



Dworshak -- Proposed Operations for WY 2018

Using Analog Year 2011 & Using RFC-FCST



— Flow-In — Flow-Out — Fcst-In — Fcst-Out — Fb Elevation — Fcst Elevation — Rule Curve — Refill Curve