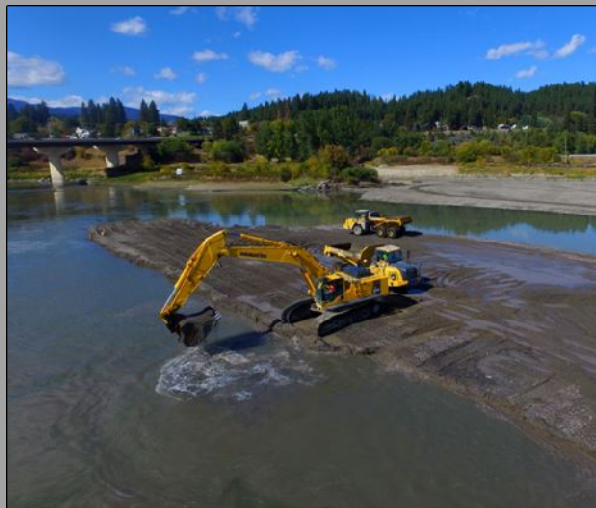


LIBBY DAM STURGEON AND SUMMER OPERATIONS

June 21st, 2017
TMT Meeting



Aerial view of construction of the Kootenai River Habitat Restoration Program's Bonners Ferry Islands project, taken September 2015. Part of this project involves dredging three deep pools in the river, with dredged material used to help build the islands.

(Photo Courtesy Kootenai Tribe of Idaho)



"The views, opinions and findings contained in this report are those of the author(s) and should not be construed as an official Department of the Army position, policy or decision, unless so designated by other official documentation."

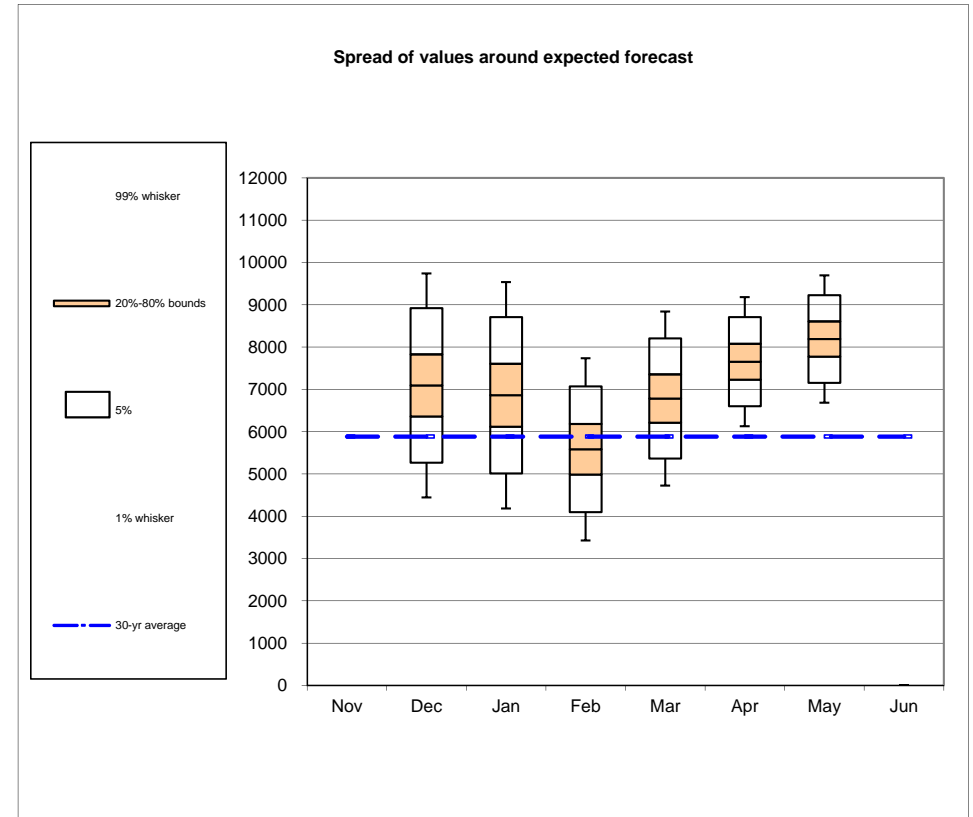


**US Army Corps
of Engineers** ®



MAY 1ST WATER SUPPLY FORECAST AND BIOP OBJECTIVES

- Libby Apr-Aug Inflow Forecast 8.2 MAF (140% of average)
 - Sturgeon Volume is 1.2 MAF
 - Bull trout minimum after the Sturgeon Pulse – Aug 31 is 9 kcfs
 - Current VarQ Flow 15.9 kcfs
- The Dalles WSF 110 MAF
 - Draft to 10 ft from full (2449 ft) end of Sept



OPERATIONS TO SUPPORT KTOI REQUEST

- Operate to 6 kcfs in Sept
- Need reservoir to 2449 ft end of August
 - Sept Ave inflow ~6 kcfs
 - Being at min flows (6 kcfs) could mean 30 Sept > 2449 ft
 - Minimize double peaks of 2 kcfs
- Look to refill Libby Dam late July to Early August



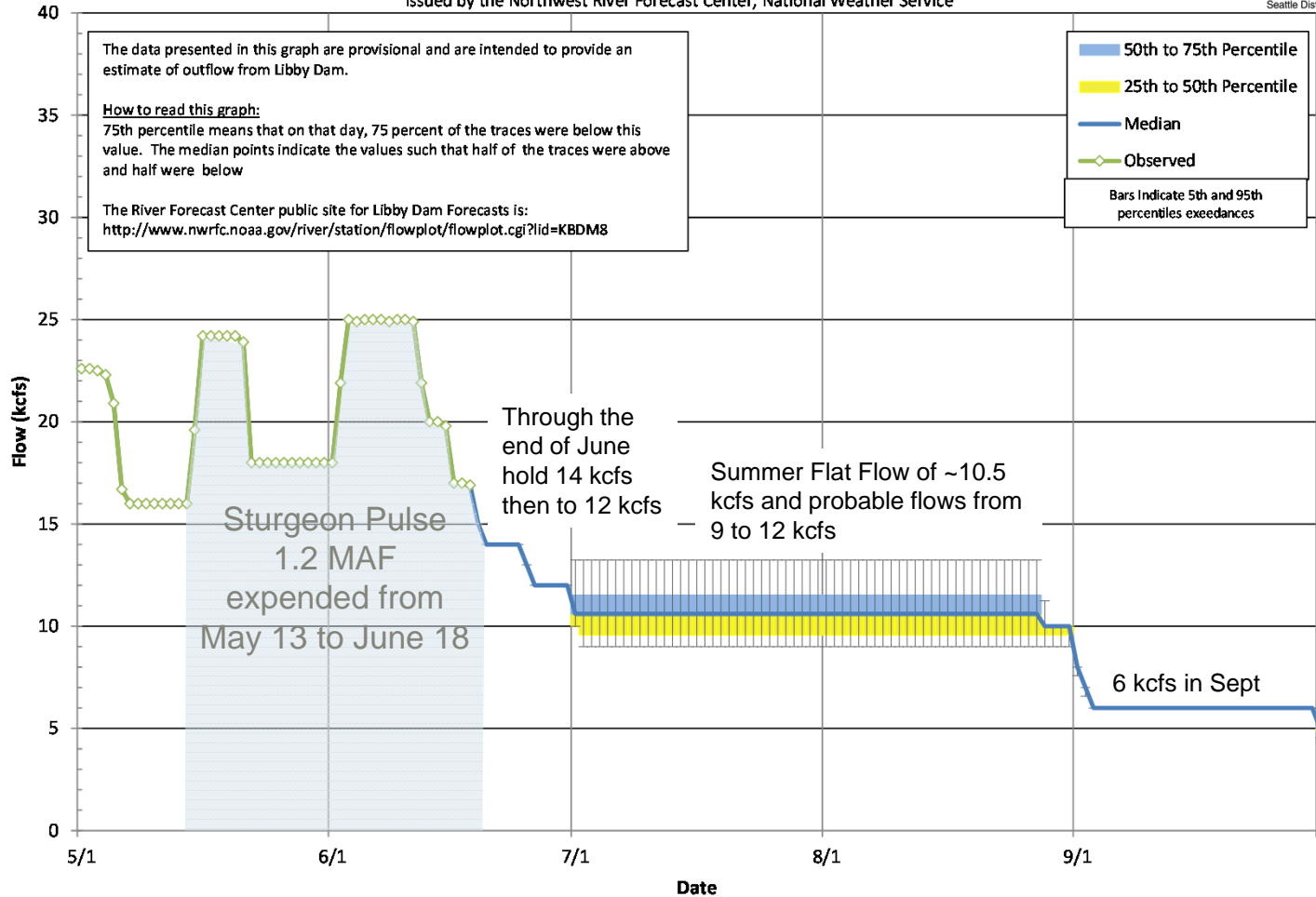
Modeled using current ESP traces as of 06/19/17

Libby Dam Outflow - Probability Chart

Corps of Engineers Projections Based on the 67 Ensemble Streamflow Prediction Traces
Issued by the Northwest River Forecast Center, National Weather Service



US Army Corps of Engineers
Seattle District



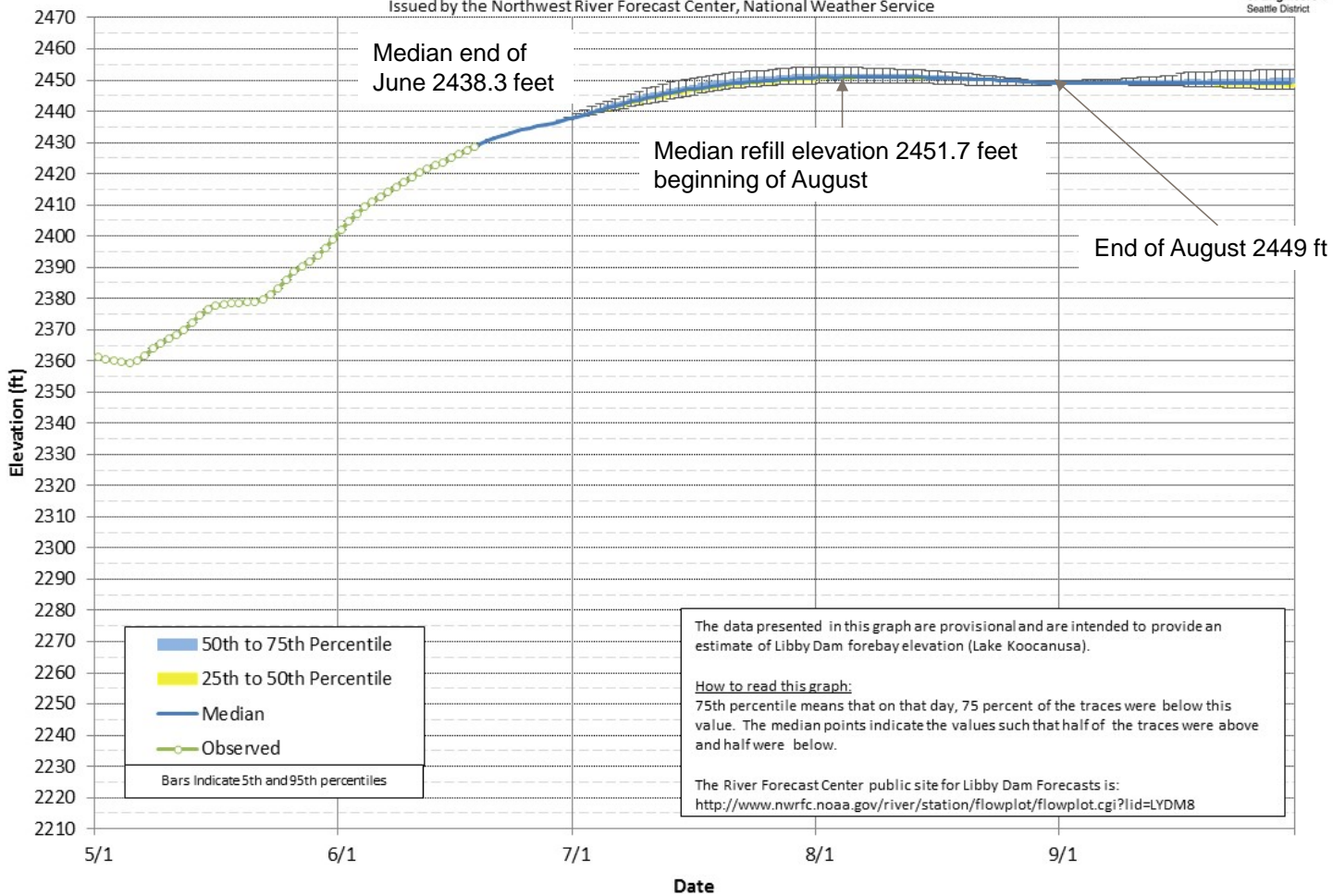
US Army Corps of Engineers



Modeled using current ESP traces as of 06/19/17

Lake Koocanusa Elevation - Probability Chart

Corps of Engineers Projections Based on the 67 Ensemble Streamflow Prediction Traces
Issued by the Northwest River Forecast Center, National Weather Service



The data presented in this graph are provisional and are intended to provide an estimate of Libby Dam forebay elevation (Lake Koocanusa).

How to read this graph:
75th percentile means that on that day, 75 percent of the traces were below this value. The median points indicate the values such that half of the traces were above and half were below.

The River Forecast Center public site for Libby Dam Forecasts is:
<http://www.nwrfc.noaa.gov/river/station/flowplot/flowplot.cgi?lid=LYDM8>



QUESTIONS?



**US Army Corps
of Engineers** ®



U.S. ARMY ®