

# LIBBY DAM STURGEON OPERATIONS

May 15th, 2019  
TMT Meeting



*"The views, opinions and findings contained in this report are those of the authors(s) and should not be construed as an official Department of the Army position, policy or decision, unless so designated by other official documentation."*

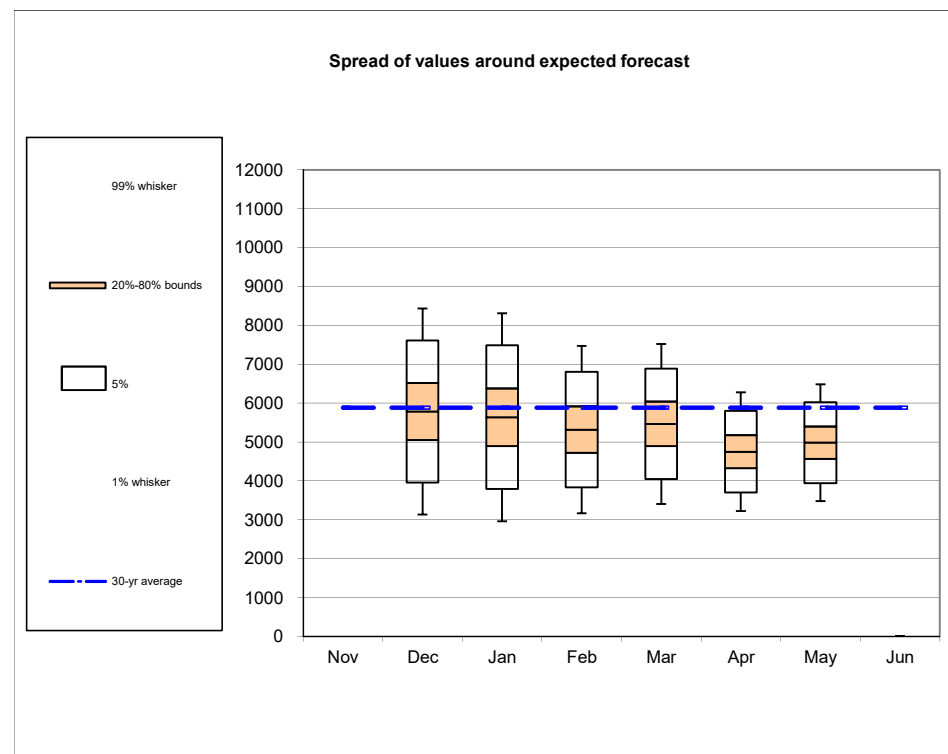


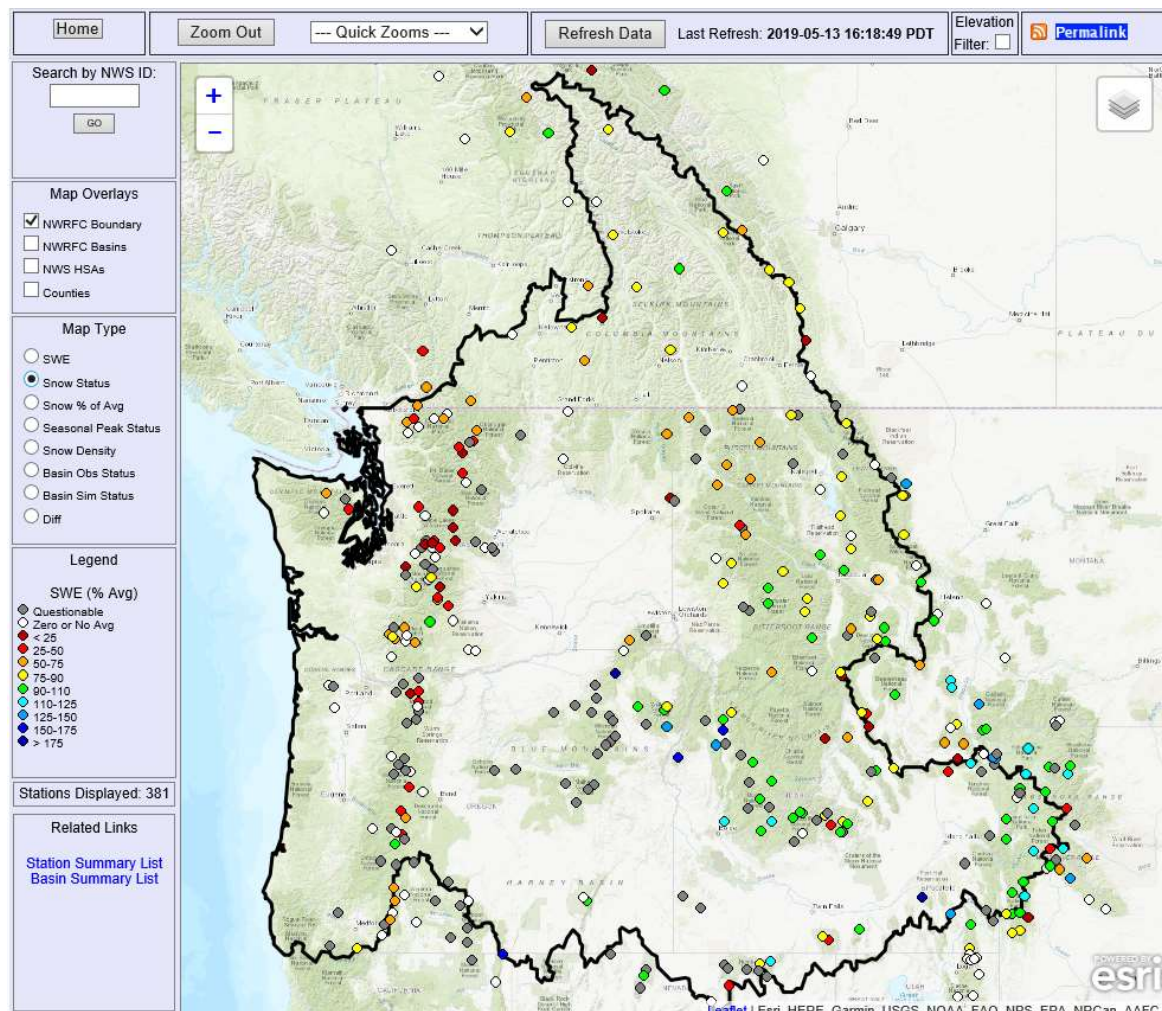
US Army Corps  
of Engineers®



## MAY 1<sup>ST</sup> WATER SUPPLY FORECAST AND BIOP OBJECTIVES

- The April-August inflow forecast for Libby Dam is 4.98 million acre-feet (MAF) (85% of average).
  - Sturgeon Volume is 0.8 MAF.
  - Bull trout minimum flows after the Sturgeon Pulse through Aug 31 is 7 kcfs.
  - Current VarQ Flow 18,000 cfs, including storage adjustment to release residual storage.
- Water supply forecast issued on May 8 for The Dalles is 82.4 MAF (94% of normal).
  - Libby flow augmentation draft to 10 ft from full (2449 ft) end of September, BUT
  - Refill will likely not reach full or even draft elevation



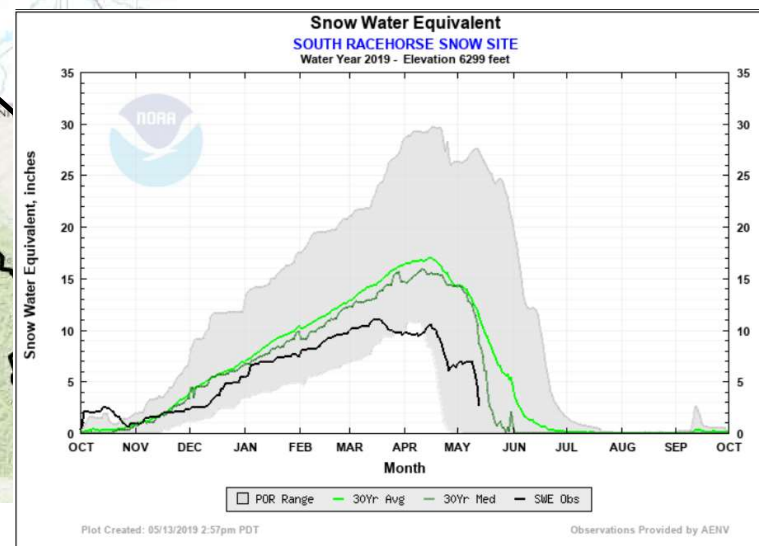
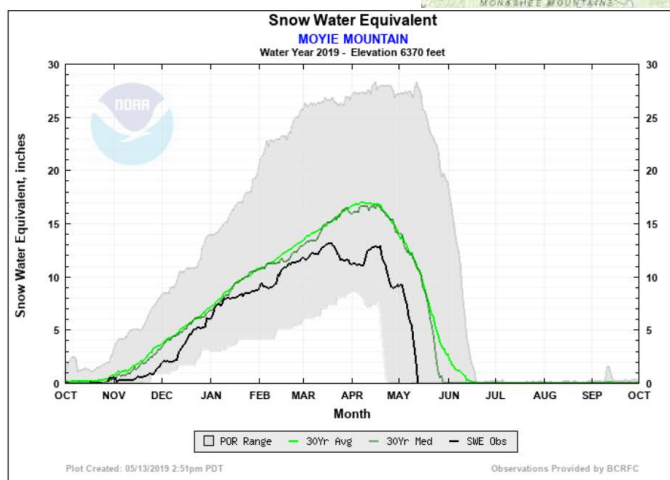
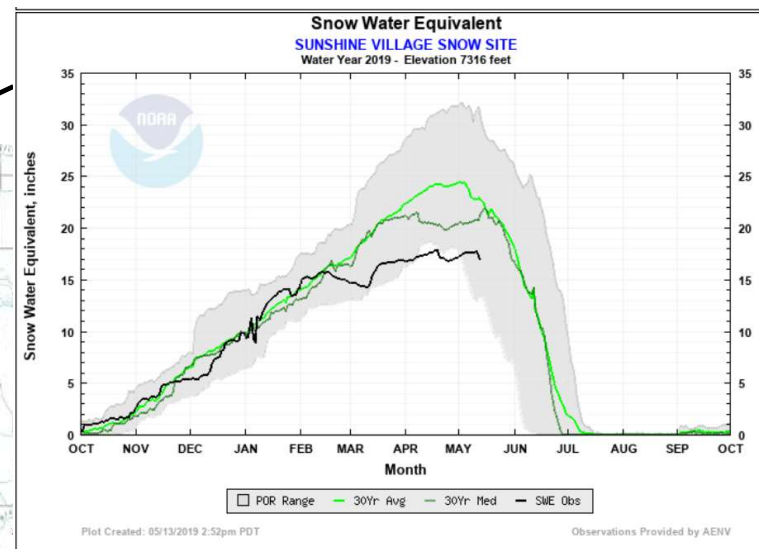
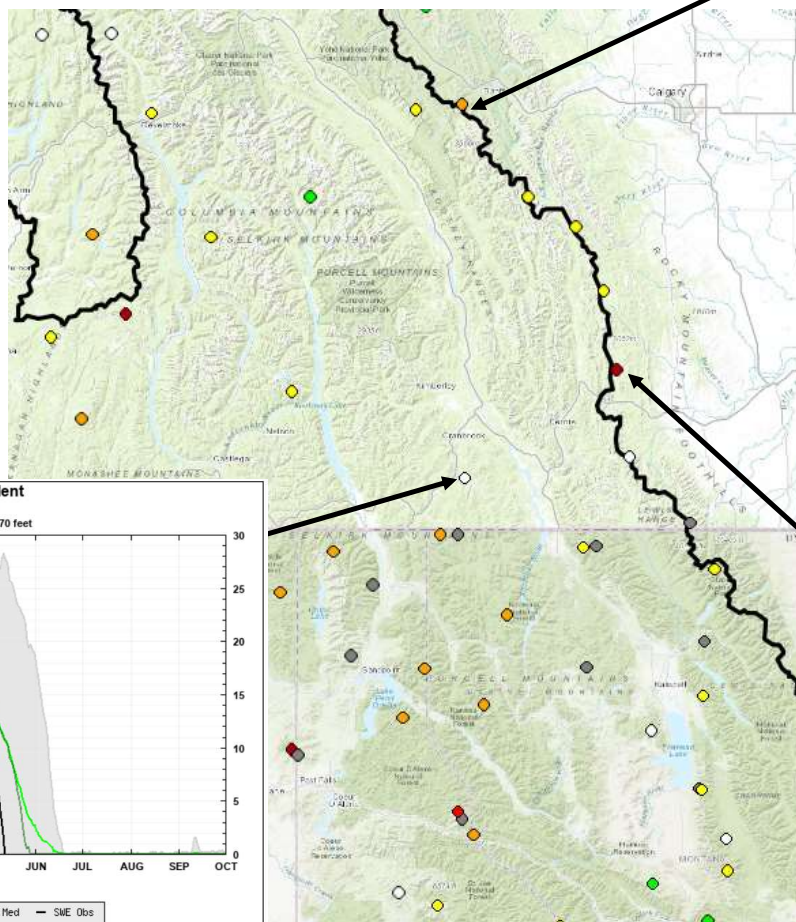


US Army Corps  
of Engineers®

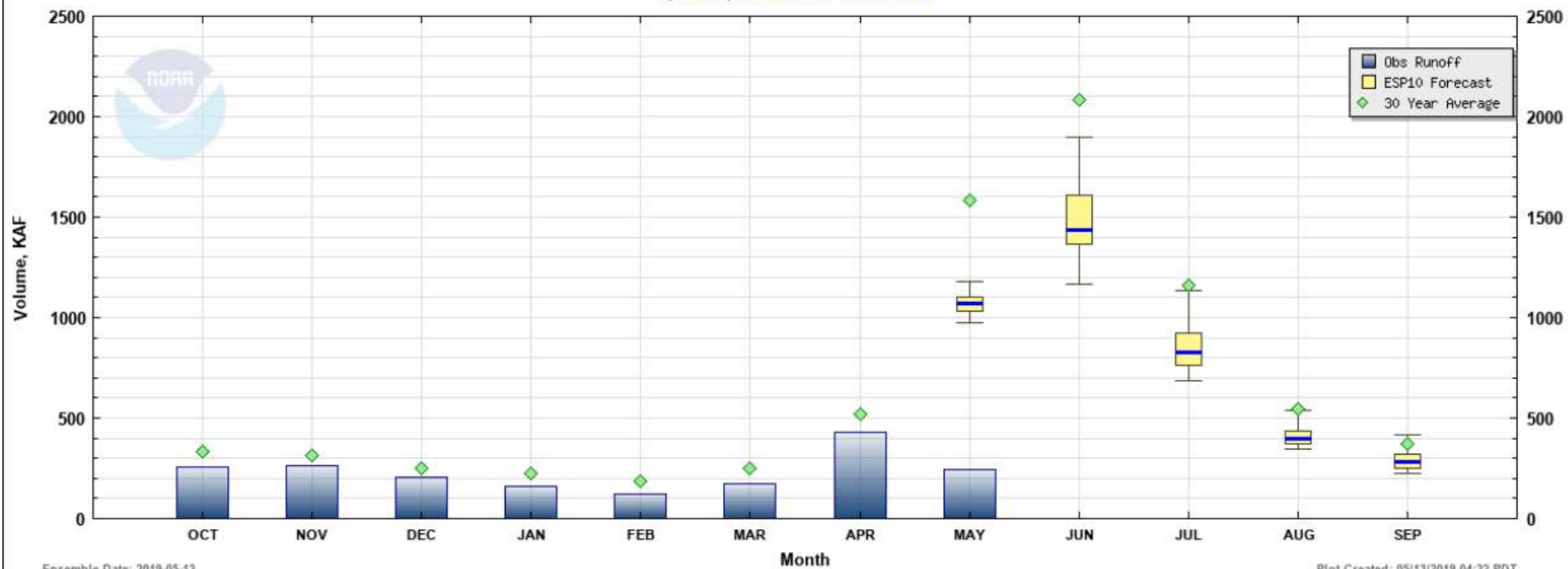




# SNOWMELT SO FAR



# Water Supply Volume Monthly Forecasts (ESP10) for Water Year 2019 (LYDM8) KOOTENAI - LIBBY DAM



Ensemble Date: 2019-05-13

Plot Created: 05/13/2019 04:22 PDT



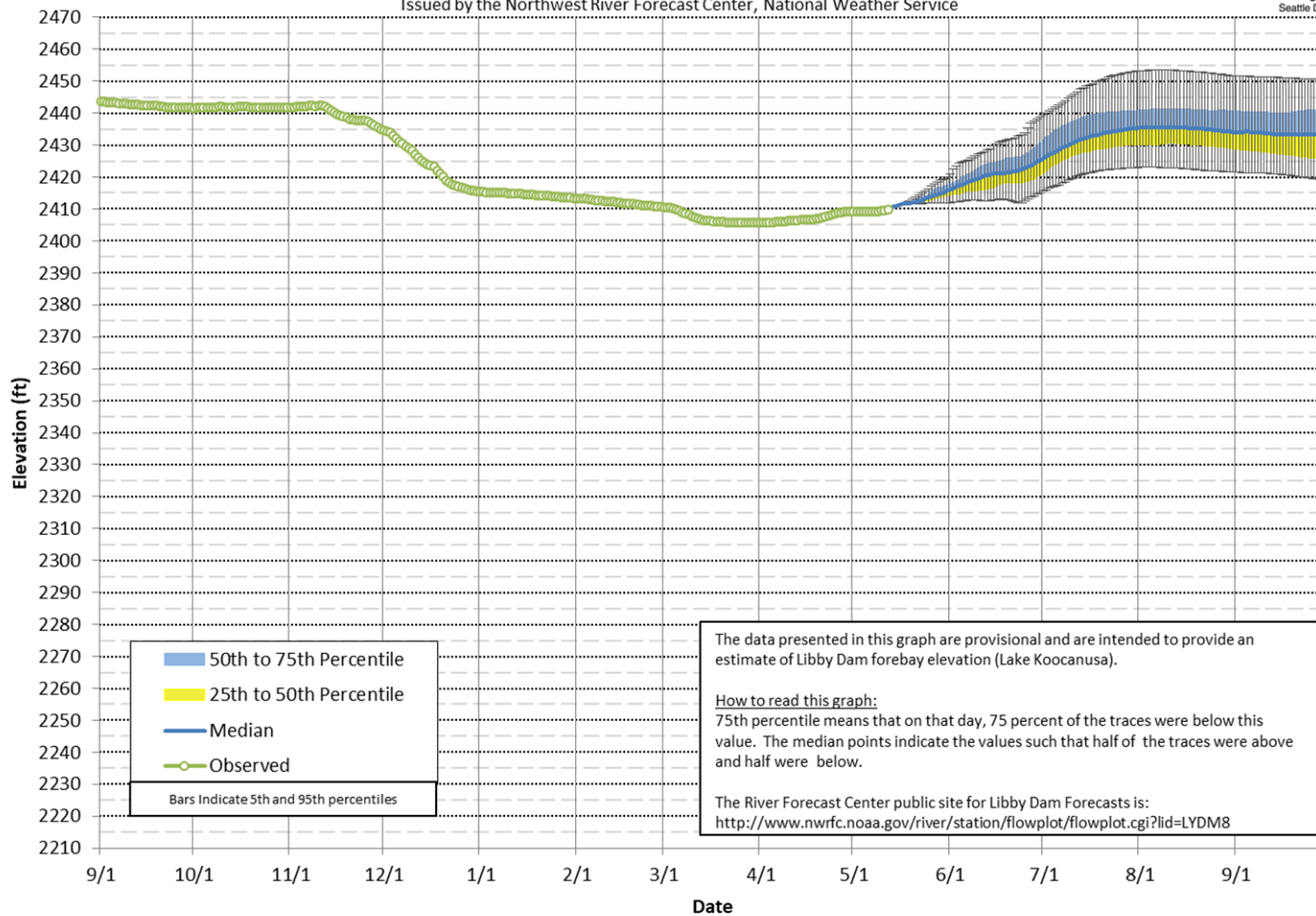
US Army Corps  
of Engineers®



Modeled using current ESP traces as of 05/13/19

### Lake Koocanusa Elevation - Probability Chart

Corps of Engineers Projections Based on the 70 Ensemble Streamflow Prediction Traces  
Issued by the Northwest River Forecast Center, National Weather Service



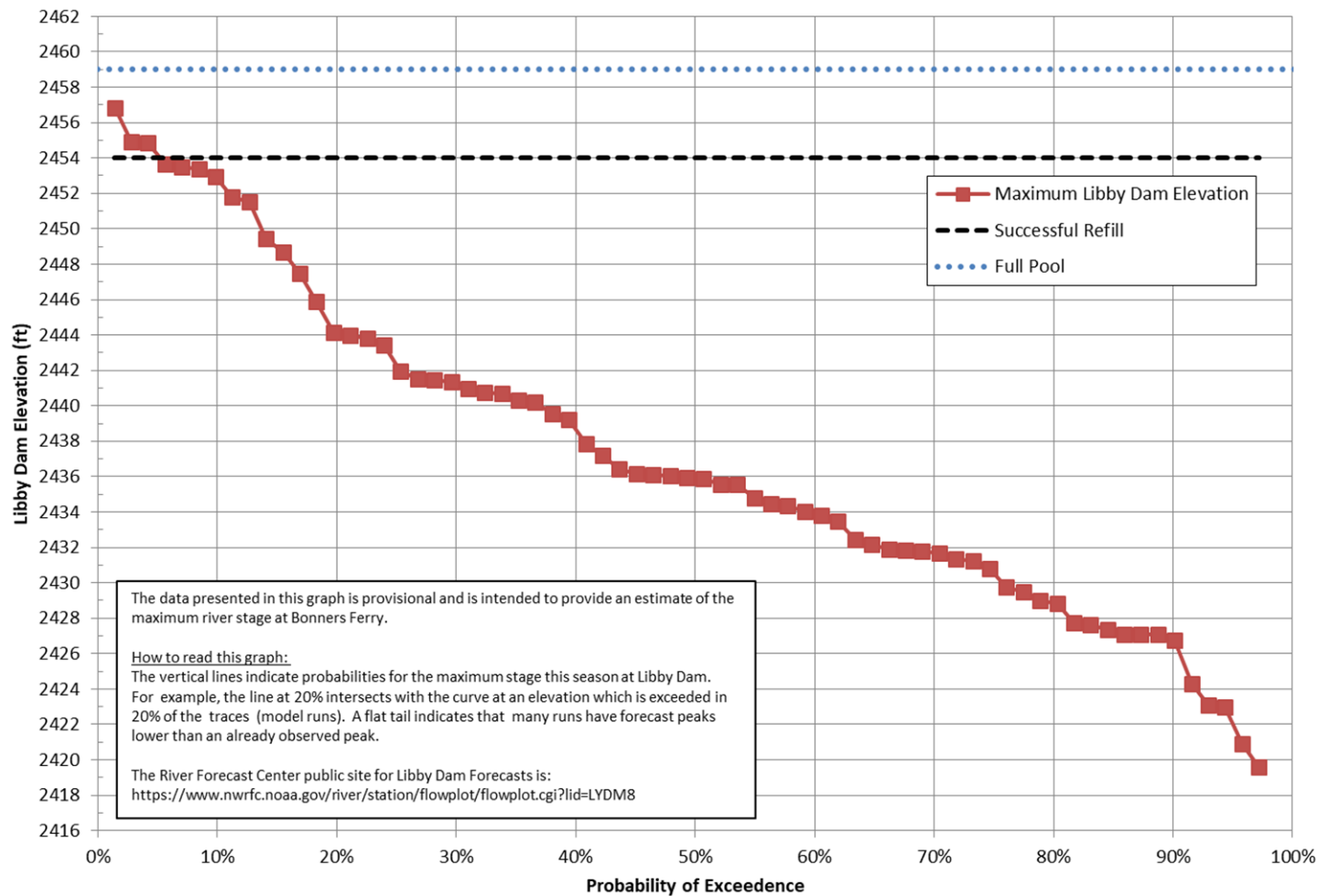
US Army Corps  
of Engineers®



Modeled using current ESP traces as of 05/13/19

## Maximum April-September Libby Dam Pool Elevation- Probability Chart

Corps of Engineers Projections Based on the 70 Ensemble Streamflow Prediction Traces  
Issued by the Northwest River Forecast Center, National Weather Service



US Army Corps  
of Engineers®

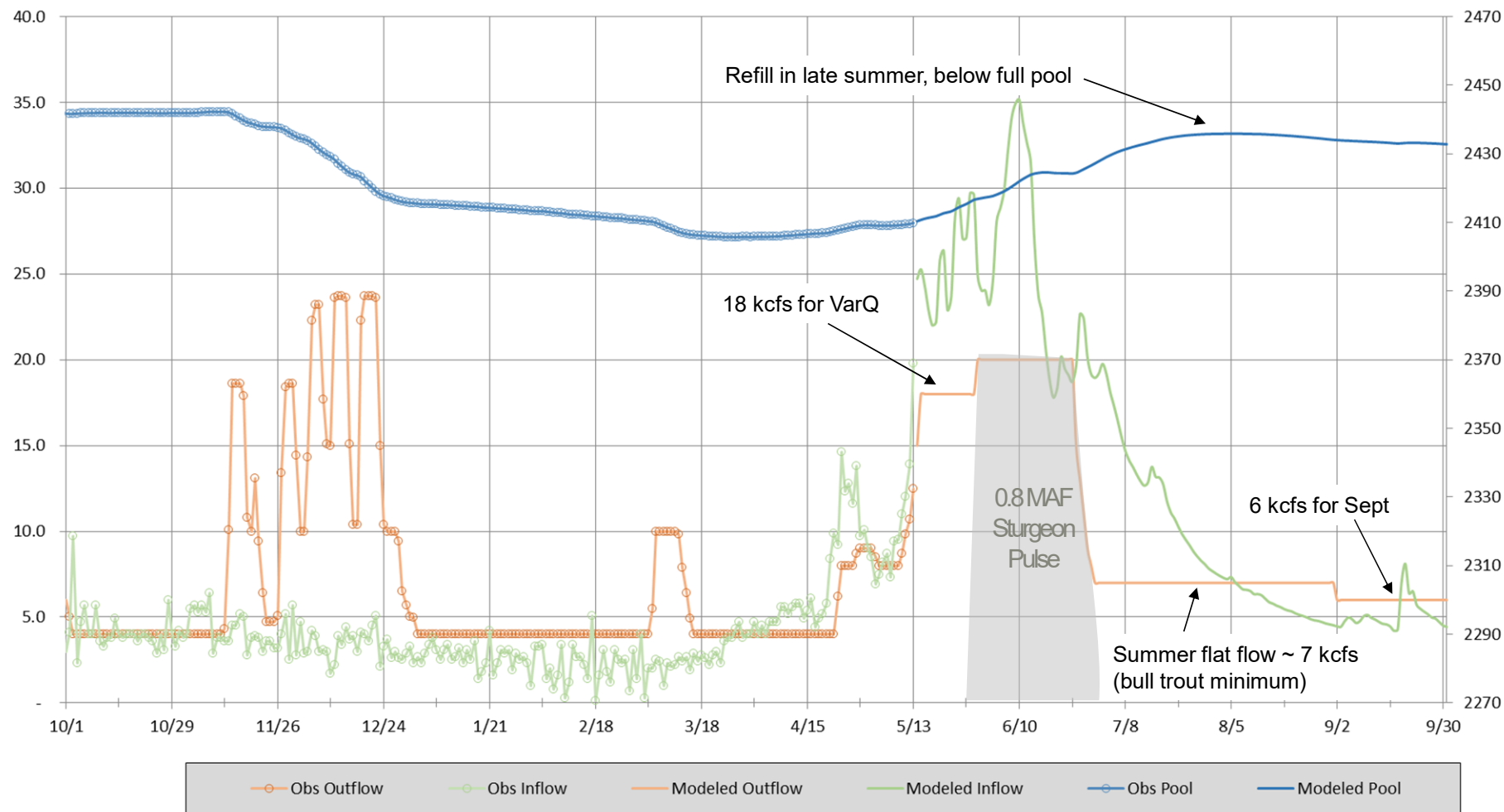


## STURGEON PULSE OPERATION





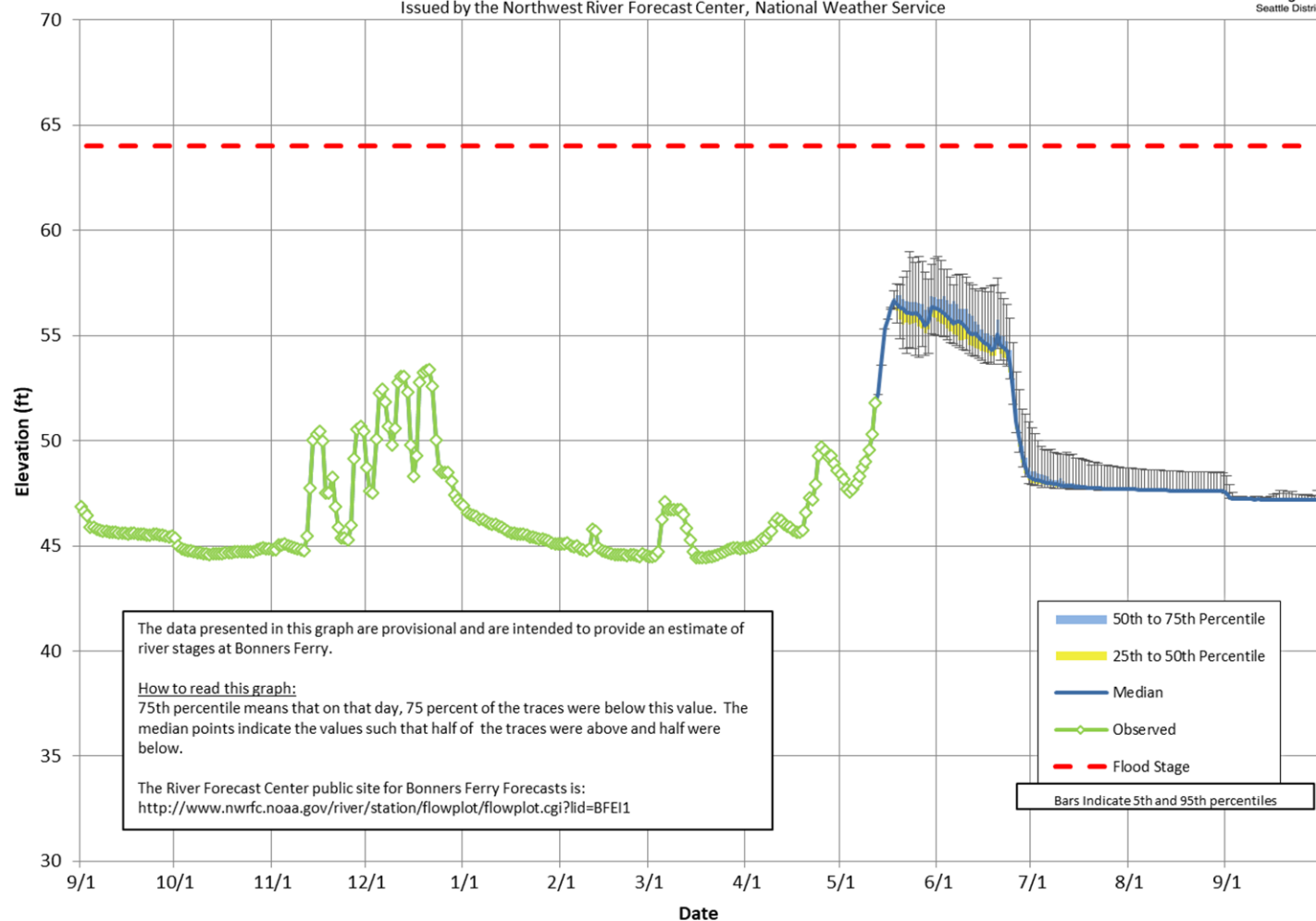
## Libby Dam ESP trace for 2016 conditions - 3.87 MAF



Modeled using current ESP traces as of 05/13/19

## Bonniers Ferry Stage

Corps of Engineers Projections Based on the 70 Ensemble Streamflow Prediction Traces  
Issued by the Northwest River Forecast Center, National Weather Service



US Army Corps  
of Engineers®



# QUESTIONS?



US Army Corps  
of Engineers®

